

Point 810

above Mangatarere Valley

4 January 2024

*Phil Brown & Issy, Alyn Higgins, Tracey Higgins,
Barry Kempton & Sioux, Ian Montgomerie, Susan Oakley,
Alan Radcliffe, John Rhodes,
Celia Wade-Brown & Skye, John Wilson*

Corybas trilobus (helmet orchid) leaves at our morning tea stop





Tmesipteris tannensis
(fork fern)



Scutellinia (eyelash cup fungus)



Earina mucronata
(bamboo orchid) - Celia

Celia W-B



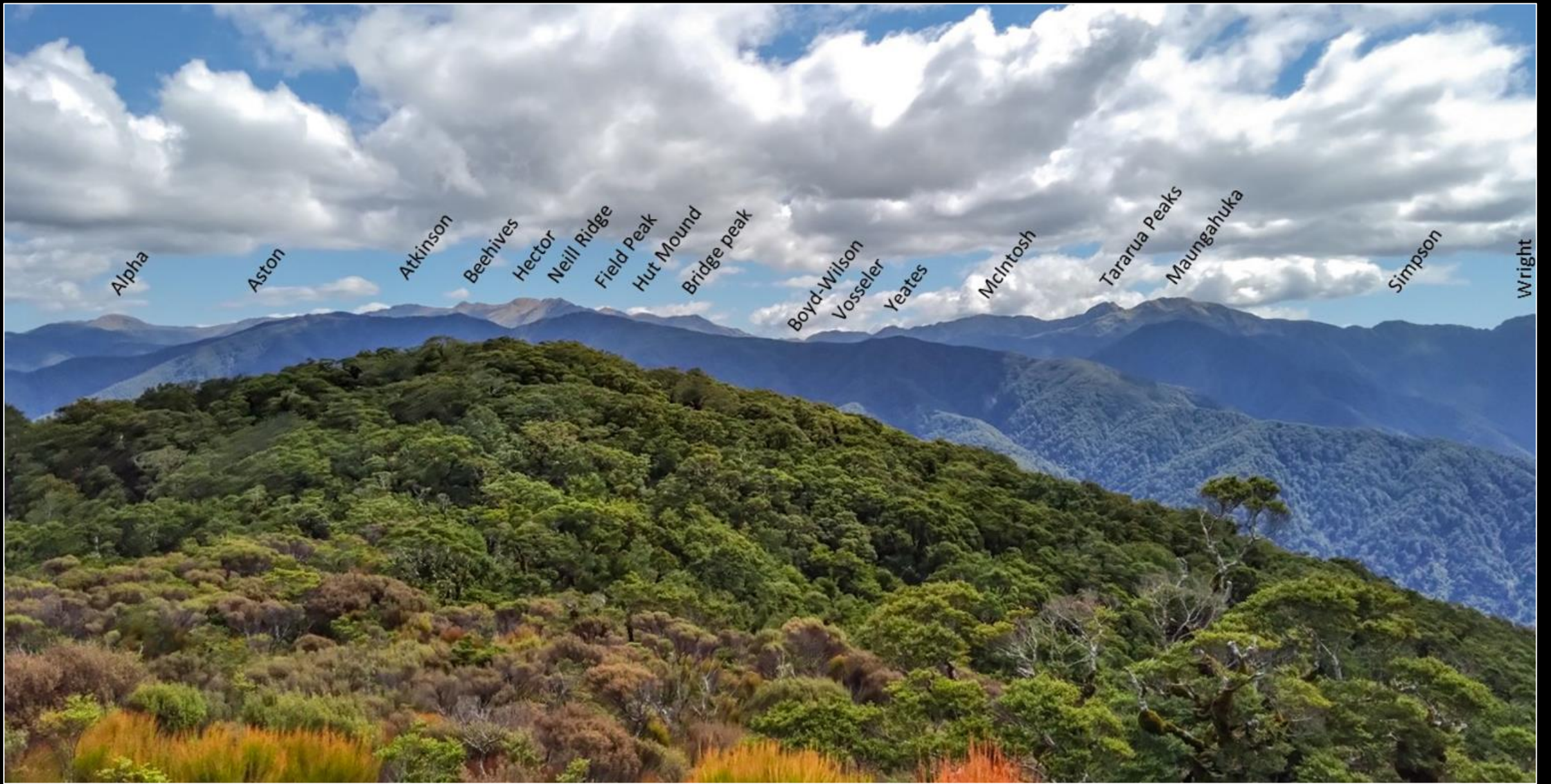
Celia, John W. and Alyn
summiting Point 810



The view to the east is clear.



Our southward view is
clear too, but not our
westward one ...



Alpha

Aston

Atkinson

Beehives

Hector

Neill Ridge

Field Peak

Hut Mound

Bridge peak

Boyd-Wilson

Vosseler

Yeates

McIntosh

Tararua Peaks

Maungahuka

Simpson

Wright

Chris Crowe

... so here it is on a better day.

-



Celia W-B

Aporostylis bifolia
(orchid)



Libertia pulchella



*Hymenophyllum
nephrophyllum* (kidney fern)



It's been a tiring day.



Rewarewa, hinau
and kamahi litter



Blechnum discolor (crown fern)



Paesia scaberula (pig fern)



Lycopodium volubile on pig fern



Blechnum novae-zelandiae (kiokio)



Mangatarere Stream,
north branch



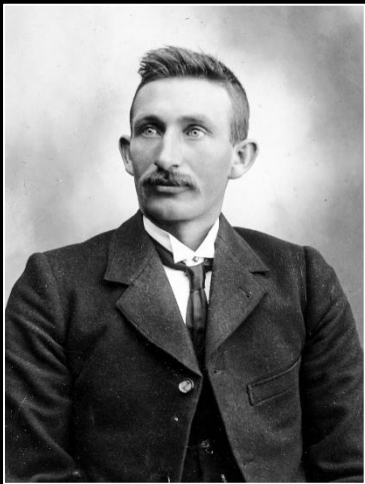
Lecanopteris pustulata (hound's tongue fern)



John R, Ian (back), Barry & Sioux (front), John W., Tracey, Alyn (back), Celia & Skye (front), Phil, Susan, Alan, Issy

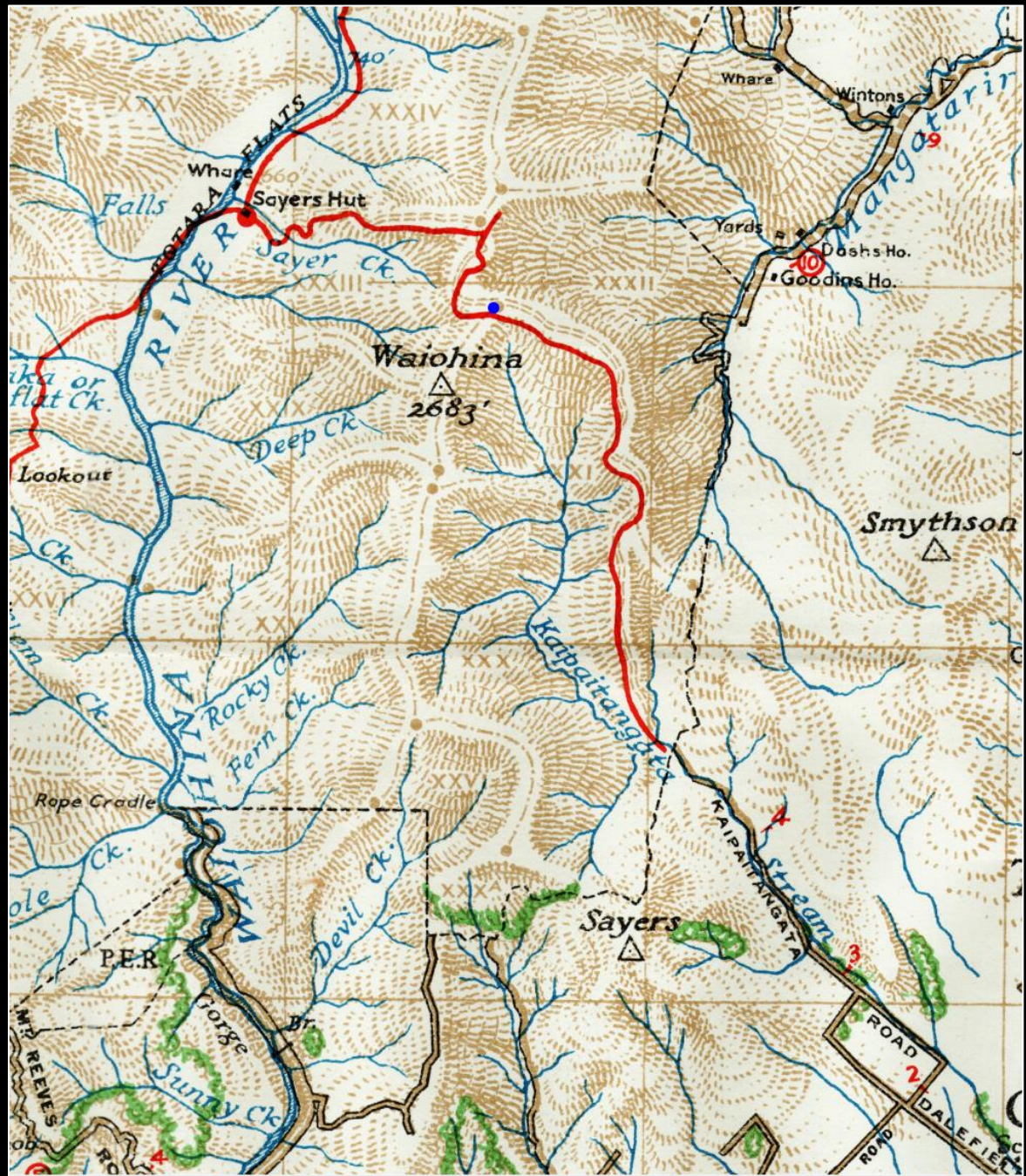
Richard Burgess Sayer had a small farm at Dalefield. It lacked enough winter feed, so in 1906 he negotiated a 50-year grazing lease on Tōtara Flats for an annual rental of £26.

Sayer established access to Tōtara Flats across the bush-covered ridges west of Dalefield. The overgrown rut of Sayer's Track, worn by cattle and horses over about 35 years, can still be followed up a spur between the Kaipaitangata and Mangatarere Streams to a point north of Mt Waiohine, where a track from the Mangatarere joins it before the steep descent to Tōtara Flats. Each autumn, the family would take about 40 dry cows this way to the flats, which they grazed also in summer. In 1909, Sayer built a hut from split tōtara slabs and shingles on the east side of the river—the forerunner of today's Sayer Hut.



Richard B. Sayer (1873-1960)

Sayer family of Dalefield



The 1936 Map of the Tararua Mountain System shows Sayers Track from the Kaipaitangata Stream to Sayers Hut at Tōtara Flats.

The blue dot marks Point 810.



Those who left cameras in Phil's car had the added benefit next day of visiting the Phil Brown Automotive Museum. Left, 1952 Daimler Consort
Right, 1933 Morris 10