

Combined SWTC / MTC trip

East Holdsworth circuit

Tararua Forest Park

24 May 2022



Seen from the valley, Jumbo is under cloud but East Holdsworth looks clear



The East Holdsworth track passes through a hazard area. Men at work, perhaps?



Yes, someone has been busy!



At bushline, first things first. A religious observation: Tararua communion.



Then a call to Tararua control in Greytown.

< Do you read me, Houston? >

< Yes, loud and clear John. Did you bike to Holdsworth? >

... sigh ...



I've biked to Holdsworth many times, but never climbed the hill and biked home the same day.

In 1984 Colin Rhodes did, in snow. He was 15.





The view ahead is a bit bleak.



Perhaps that's Mitre in the distance?



The East Holdsworth ridge is like a mini Neill-Winchcombe.



That's an outlier of Angle Knob.



Tararua Highway 2 (unsealed)



Stone stripes on the bump before Mt Holdsworth



Panoramic view from the trig

Holdsworth trig in 1919 ...



Wairarapa Archive

... and in 1928



Batchelor family collection



Looking back





High Ridge, where Lester Tweeddale went astray in June 1969



Tweeddale family



Joe Nawalaniec



A cup of tea awaits ...

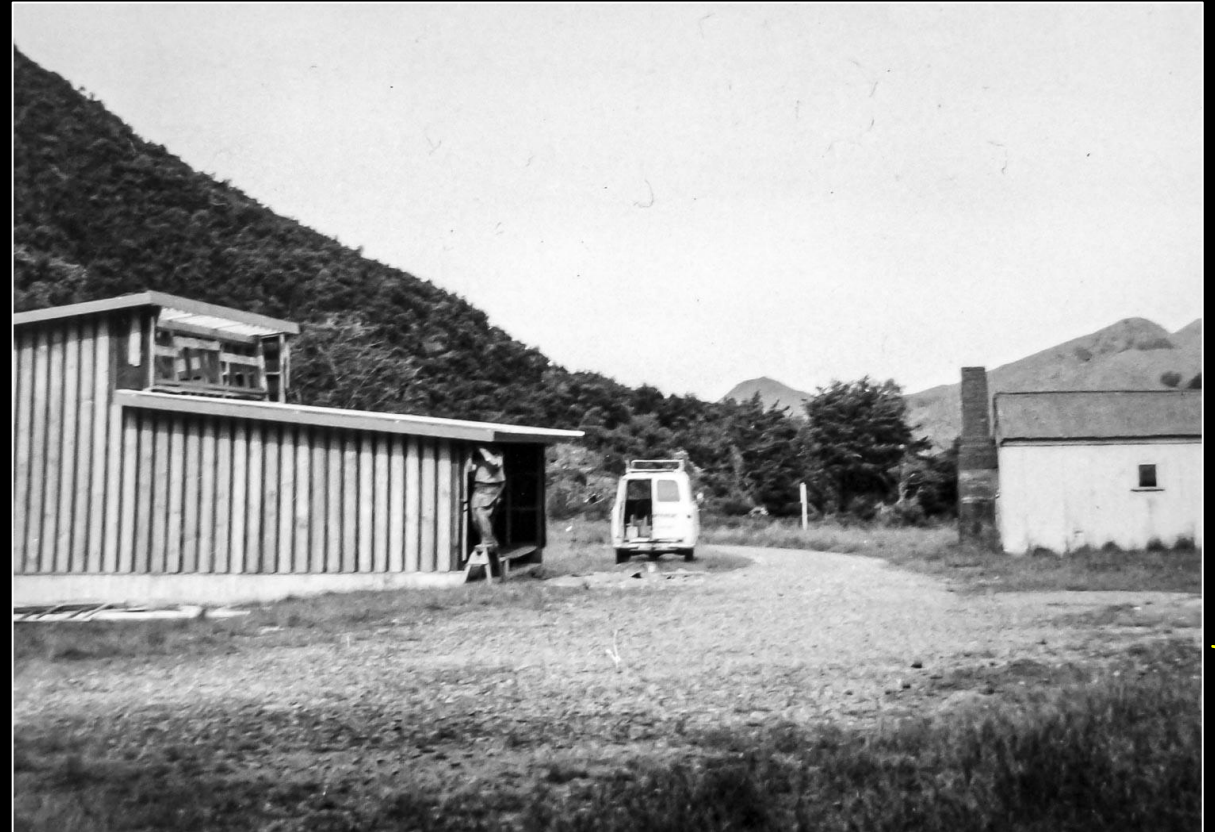




... but Powell tearooms are closed!



Holdsworth Lodge today ...



... and in 1967

Fortunately, the next facility ...

... is open!

