

South Wairarapa Tramping Club

Newsletter for May 2021

www.swtc.org.nz

newsletter editor: Lynne King lynne.king@xtra.co.nz 04 232 1426

Club night:

Tuesday 11 May 7.30 pm

St John's Hall Main Street Greytown

Speaker: Mike and Laura Hopkins on Tibet

Supper: (tea towel, milk and biscuits) Ed & Juliet Cooke

At the end of each club meeting, the people who did the supper should pass the supper box to the people next on the roster.

For the next two meetings the roster is:

June: Bruce Eglinton

July: Barry Kempton

Trip List

2021

Date	Destination	Trip coordinator	Phone	Fitness
1.5	Farm walk Ngawaka	Ian & Rosie Montgomerie	021 189 3862	F
8.5	Somes Is	Barry Kempton	304 9353	M
15.5		Ian & Rosie Montgomerie	021 0237 4092	
22.5	Kiriwhakapapa to Mikimiki	Jennifer Pomeroy	304 8011	M
29.5	Rimutaka Reserve	John Rhodes	304 9095	M

If you wish to go on a trip, please let the organiser know by the Thursday prior.

Trip Gradings

The letters after the cost for a trip are an indication of how tough it will be.

VE **Very Easy.** A stroll suitable for the youngest, oldest and least fit of people.

E **Easy.** Up to four hours walk. May involve some uphill. Lots of stops.

M **Moderate fitness.** 4-6 hours walk per day. Lunch and smoko breaks.

F **More fitness.** Some experience needed. May go off tracks. 6 – 8 hours walk per day.

FE **Fitness extreme.** 8 – 18 hours walk, fast. Heaps of climbing. Stops are hurried. Enjoyed only by masochists. May take up to a week to recover.

Leaders: Please remember if you are unable to lead your trip it is your responsibility to find a replacement leader / trip.

To all you good and faithful trip report writers: Please ensure your reports have the destination and the date in the subject line of the email, and also in the report itself. I collect a few reports over the month and when I go to do the newsletter I have emails saying, "Yesterday's tramp," or "Saturday's tramp," and when I open them I often have no idea which trip the report is about. Then I have to hunt around earlier newsletters and try and put dates and destinations together. And a reminder that photos must be JPG format and sent as an attachment to an email for me to use them. Thanks - Lynne

Trip Reports

SOUTHERN WALKWAY 20 MARCH

We arrived at Oriental Bay around 9.15. Free parking opposite the entrance was handy. The initial climb is a little steep, but Ed and Juliet seemed to manage, considering their mid week trip to Powell Hutt.

We stopped for smoko on a grassy berm overlooking Oriental Bay. Lots of photo opportunities and John has taken some amazing photos, often capturing things we fail to notice as we pass by. A mix of modern architecture and old villas.

Onward and upward to Mt Victoria then the Town Belt to Mt Alfred Park, where most of us tried out the slippery slide. An old pa site was located nearby. Then to Alexandra Road where we had good views over to Hataitai and Miramar peninsular. Merran was able to point out her home. We crossed Constable Street and continued on to Truby King Park and Karitane. Truby King was the founder of NZ Plunket Society and is buried in a mausoleum in the walled gardens. We enjoyed lunch on a seat in the gardens.

We headed towards the back of the zoo and Melrose Park, then a steep climb to Mt Albert Park and sports ground where a game of cricket was taking place.

A magnificent view at the reservoir of the harbour entrance and two ferries passing each other.

We followed Buckley Road down to Houghton Bay where a bus was conveniently waiting for our trip to the city. We could have walked to Island Bay but chose the shorter option. Lots of harriers were heading around the bays as we crossed to the bus stop. The double decker bus gave an insight into the narrowness of roads in this area.

Arriving at Courtenay Place and returning along Oriental Bay, saw us back at the start at 2.30 pm.

A good walk with great company.

Ed and Juliet Cooke, Woody Woodcock, John Rhodes, Chris and Linda Crowe, Merran Cooke and Bethany, Rosie and Ian.

Follow this link to see John's photos:

<http://swtc.org.nz/wp-content/uploads/2021/03/SWTC-Southern-Walkway-20.3.2021.pdf>

RANGITIKEI RAMBLES 26-28 MARCH

Ten of us met at the Adobe Motel in Marton, an ideal base from which to attack the six Rangitikei Scenic Reserves.

Pryce's Reserve, east of Rata was the first, a flat loop round the 13ha reserve with wonderful birdsong, and fantails flitting around for most of the route. The picnic tables provided a good morning tea spot, and refreshed, we set off for **Bruce Park**, about 6kms south of Hunterville. The land was gifted to the people

of NZ by Robert Cunningham Bruce, an early settler, in 1917. The reserve features huge rimu, totara and kahikatea, plus an impressive gateway at what used to be the main entrance, and a memorial to Mr Bruce erected in 1923.

We lunched at the park in Hunterville before heading west out of the town, to Mangahoe Road, and the next stopping point, **Laird's Reserve**. We walked up a steep farm track then dropped down to a sheltered forested valley with matai, lemonwood, miro, and more magnificent rimu, totara and kahikatea.

Further along Mangahoe Road we stopped at **Sutherland Mangahoe Reserve**, one area of which contains a grove of immature kahikatea 20m tall, so dense that the tops knock together in strong winds.

We decided four reserves had provided enough walking for one day, so drove on down Turakina Valley Road and back to Marton for a welcome shower, rest, drinks, and dinner at Cook's Bar & Cafe, with a statue of Captain Cook nearby. (Marton was originally called Tutaenui, meaning dungheap, but was renamed Marton in 1869, the 100th anniversary of Cook's landing in NZ, by early settlers many of whom had lived in Marton, Cook's birthplace.)

On Sunday we returned to Turakina Valley Road for **Sutherland Puriri Reserve**, where we climbed up to Maori food pits, and then around another circuit. Notable in this reserve were the huge bundles of epiphitic perching plants which had fallen to the ground, probably due to the dryness, and strong winds in a February storm.

We then decided to return home, leaving **Archies Track** and **McPherson's Bush** for another excursion.

Bruce Park is administered by DOC, but all other reserves are owned and looked after by Forest & Bird. We are grateful to them for publicising information about the reserves in a Forest & Bird magazine, and for creating and maintaining such wonderful bush areas.

Those on the tramp were Peter & Ruth Graham, Stuart Hammond, Ian & Rosie Montgomerie, Silvia Sze & Blair Crafar with toddler Freddy, Kevin Wilkinson and Ed & Juliet Cooke, leaders.





RAPAKI 5 APRIL

After chatting with Charlene we decided to organize an Easter Monday walk. We met in Greytown and drove to the start of Rapaki Hill Walk, at the end of Shooting Butts Road. Jen drove to the Hinekura and Te Muna Road corner and Ed and Juliet picked her up, so we had a car to ferry drivers back to the start. This was helpful as the day was fairly gusty, and the road stretch would have been a challenge. Chris Crowe met us at the start.

The gale was strong to start and saw us put on jackets; sunhats were blown off fairly fast. Lots of chat as we headed up to the signpost at the top, then climbed the stile to the viewing point overlooking the vineyards on Te Muna Road. We then returned over the stile and followed the fence line down the hill through the first gate where we stopped in a sheltered and warm spot for morning tea, with a lovely view of vineyards and eastern hills.

The route follows the pine plantation, then downhill to another stile, following the ridge until we saw the lone pine tree near Te Muna Road. Now on the roadside, we walked to the intersection with Hinekura Road. Jen took drivers to the start and returned to pick us up. We had walked another kilometre up hill to a pull off area.

This walk took us about two hours. If we had walked the complete loop, it would take another hour.

On our way home, Ian and Rosie, Barry and Charlene checked out the new subdivision at Moiki, and decided to have our lunch at Morisons Bush, as Charlene had not been there before.

A lovely impromptu trip with Mary, Lesley, Barry, Jen, Ingrid and Annemarie, Charlene, Ed and Juliet, Rosie and Ian.

MIKE ASHBY'S FARM, PONATAHI 17 APRIL

We met John Pepper at 8.50 at the cattle yards on Mike's farm. Ruth and Peter Graham and Jane Lenting were with him as they had left their vehicle at John's and he had brought them up to Ashby's. The other three drivers who had brought vehicles from town with passengers then had to drive back to John's place and leave their vehicles there for when we came out from our finished walk. He then brought them back and we commenced the walk.

We meandered our way up a farm track through the rolling hills, everything was nice and green from recent rain, and nice plantings here and there of natives, pittosporums, corokia, and flaxes. We had a light shower of rain and on went the coats but it was not long before they all came off again. We took a diversion off the track for John to show us and explain to us how he installed a ram pump system supplying stock water to some of the paddocks on the farm, then went round a corner and had morning tea in the sun. There was a scattering of mushrooms here and there and trampers were pulling out bags to fill them up. We climbed up the hill and around the track and then John showed us the cliffs where Mike takes out lime to spread over the farm once a year.

There was a big climb of over a hundred and fifty metres to the top of a hill where we rested and then had another wee climb to a lookout over the valley, but because it had clouded over you could only see the top of the lake and lower parts of Tararuas. Rain was still coming down in the valley. Barry and I didn't go up to the top of the wee hill, but he picked mushrooms and I waited in the sun. We both then walked on to find a sunny spot for the others when they came down off the hill. It was getting a bit cool now with a southerly blowing and a threat of rain again.

We moved on after lunch over a few more paddocks and down through pine trees into a gorge. John said they quite often shoot deer in there, he showed us two big stag wallows where the stags roll around in the mud. It then started to rain heavily again so it was a dash for the pine trees. It cleared and we climbed up and out of the gorge and over to paddocks and could see the Ponatahi Road and vehicles moving along the road. Over a fence and on to John's property, down through a gate and into his back

garden. We inspected (like we trampers do) his strawberry patch, glass house and vege garden and his forge before we left to come home.

Our walk was about four hours and Ruth's phone recorded a distance of 13km. Thank you John for leading the trip and to Mike Ashby for giving consent to walk over his farm.

A most enjoyable day. Those who came were Rosie and Ian Montgomerie, Ruth and Peter Graham, Jane Lenting, Carol McNaught, Lesley Callaghan, Jennifer Pomeroy, Charlene James, Juliet Cooke, Barry Kempton, Chris and Liz Crowe, John Rhodes, John Pepper Leader, and myself Mary Lambert for organising the day.





WINZENBERG HILL 24 APRIL

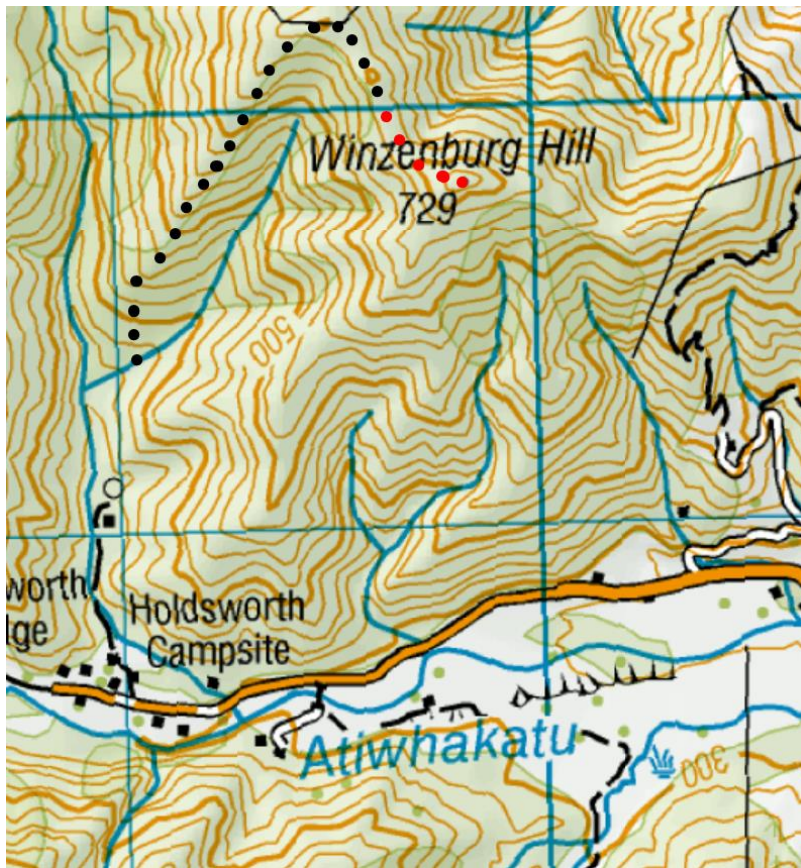
Three South Wairarapa TC members and four Masterton TC members carried on the work begun on 5 October and continued on 14 November last. The day was sunny and mild with relatively little wind. The track is now clear to a point about 400 m short of the summit, which we hope to reach next time—or the time after that.

South Wairarapa TC: Chris Bland, Chris Crowe & John Rhodes

Masterton TC: Nigel Boniface, Laura Hopkins, Mike Hopkins & John Rhodes

Mike Hopkins, Chris Crowe,
John Rhodes, Nigel Boniface,
Laura Hopkins





Holdsworth from Winzenberg track

